



Quality Access Doors - FAST!

# SUBMITTAL/TECHNICAL DATA SHEET

SKU: **BA-ACD-2064**

## SPECIALTY DOORS

RECESSED ACOUSTICAL ACCESS DOOR



### APPLICATION

This recessed access door is ideal for use on Acoustical drywall walls and ceilings where maintaining STC (Sound Transmission Class) and OITC (Outdoor Indoor Transmission Class) is required. The unique taping bead flange allows for a concealed finish.

### FEATURES

- Zinc coated steel provides superior corrosion resistance
- Drywall taping bead flange
- Recessed door fitted with 5/8" thick drywall, ensures finish similar to surrounding
- Tested and evaluated to ASTM: E90(09), ASTM: E413(16), ASTM: E1332(16) and certified to STC Rating 64 and OITC Rating 53

### SPECIFICATIONS

**MATERIAL:** 18 Gauge Satin Coat Steel

**DOOR:** 18 Gauge recessed design filled with 1 1/2" thick acoustic mineral liner, 0.11" thick mineral filled vinyl barrier and fitted with 5/8" thick drywall as finished face

**FRAME:** 18 Gauge, press bent for strength and rigidity, drywall taping bead flange Insulated with 1" thick acoustical mineral liner

**GASKET:** Silicone perimeter seal gasket

**HINGE:** Continuous exposed stainless steel piano hinge

**STANDARD LOCK:** Screw driver operated Compression Latch

**OPTIONAL LOCK:** Compression Latch with Hex Head, Hex with security pin, Square, Triangle

**ACOUSTIC RATING:** This door has been tested and evaluated to ASTM: E90(09), ASTM: E413(16), ASTM: E1332(16) and certified to STC Rating 64 and OITC Rating 53.

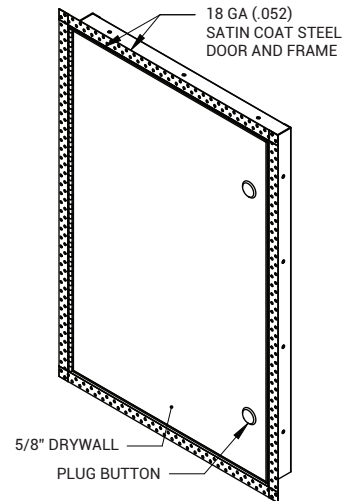
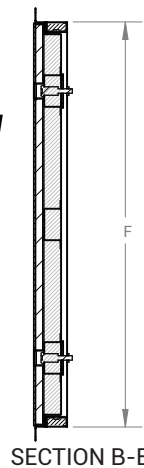
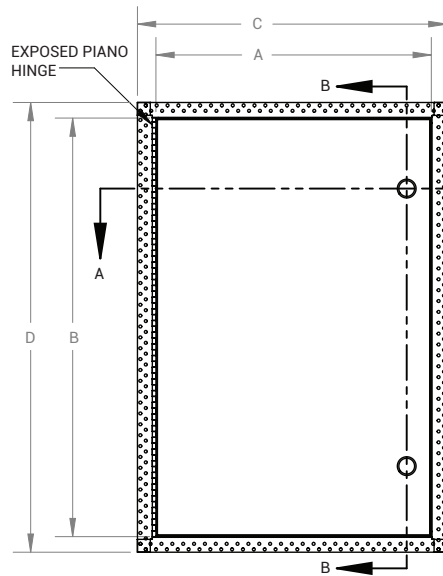
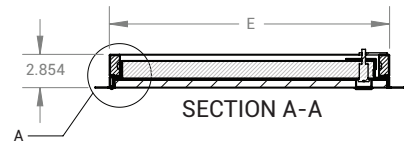
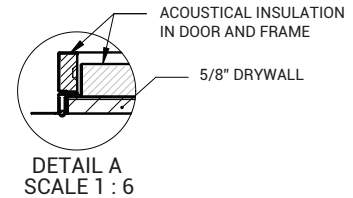
**FINISH:** Satin Coat Steel

### DIMENSIONS AND APPEARANCE

>> [CLICK TO VIEW ADDITIONAL DETAILS AND PRICING <<](#)

#### STANDARD SIZES:

DOOR SIZE W x H INCHES (MM)	LATCHES	WEIGHT LBS	KG
12 x 12 (305 x 305)	1	13.2	6
18 x 18 (457 x 457)	1	24.3	11
24 x 24 (610 x 610)	1	41.9	19
24 x 36 (610 x 914)	2	62.0	28



For a complete list of options visit [www.BestAccessDoors.com](http://www.BestAccessDoors.com)

### PROJECT DATA

Custom Sizes Available - Fast!

Scan or Click



PROJECT NAME :	QTY	W	H	OPTIONS
ARCHITECT :				
DEALER :				
CONTRACTOR :				
LOCATION :	SPECIAL INSTRUCTIONS :			
DATE :				
TAGGING INSTRUCTIONS :	SUBMITTAL APPROVAL : (signature or stamp)			

To view Pricing and Additional Product Info.

TELEPHONE:  
1-800-483-0823  
FAX:  
1-888-828-6021



228 PARK AVE. S. #76520  
NEW YORK, NY, 10003

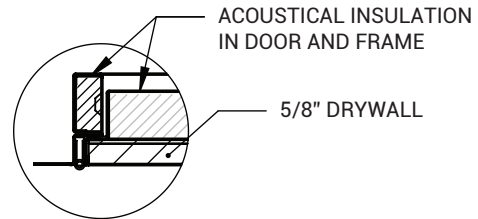
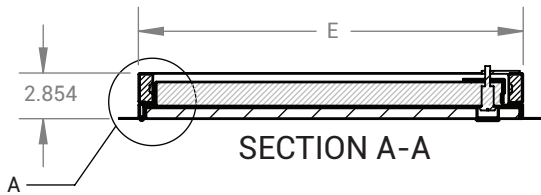


WEBSITE:  
[www.BestAccessDoors.com](http://www.BestAccessDoors.com)  
E-MAIL:  
[info@bestaccessdoors.com](mailto:info@bestaccessdoors.com)

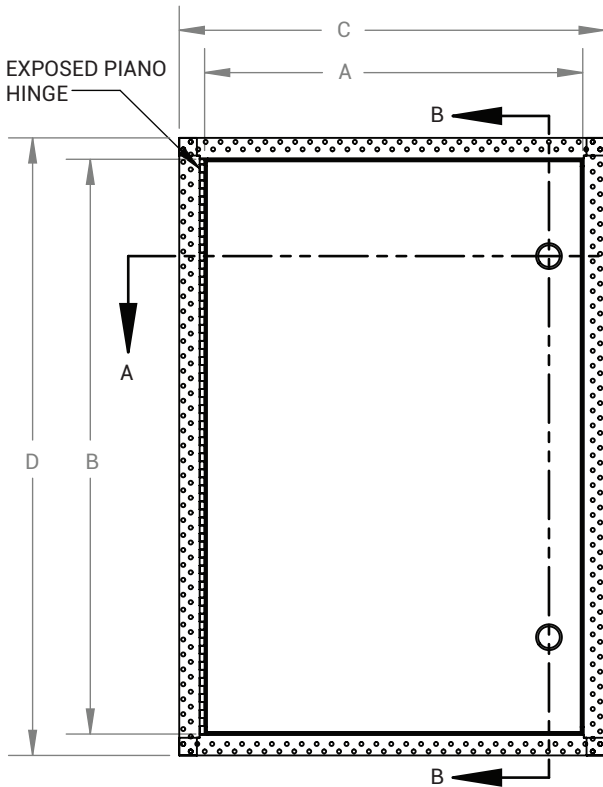
# BA-ACD-2064

# DRYWALL ACOUSTICAL ACCESS DOOR

NOMINAL SIZE	A	B	C	D	E	F	LOCK QTY
12 x 12 (305mm x 305mm)	11.567 (294mm)	11.818 (300mm)	14.484 (368mm)	14.484 (368mm)	12.044 (306mm)	12.044 (306mm)	1
16 x 16 (406mm x 406mm)	15.567 (395mm)	15.818 (402mm)	18.484 (469mm)	18.484 (469mm)	16.044 (408mm)	16.044 (408mm)	1
18 x 18 (457mm x 457mm)	17.567 (446mm)	17.818 (453mm)	20.484 (520mm)	20.484 (520mm)	18.044 (458mm)	18.044 (458mm)	1
24 x 24 (610mm x 610mm)	23.567 (599mm)	23.818 (605mm)	26.484 (673mm)	26.484 (673mm)	24.044 (611mm)	24.044 (611mm)	1
24 x 36 (610mm x 914mm)	23.567 (599mm)	35.818 (910mm)	26.484 (673mm)	38.484 (977mm)	24.044 (611mm)	36.044 (915mm)	2



DETAIL A  
SCALE 1 : 6



SECTION B-B

