



Quality Access Doors - FAST!

# SUBMITTAL/TECHNICAL DATA SHEET

## STANDARD OPTIONS

- MATERIAL:**  
16 gauge cold rolled steel frame & 20 gauge galvalneal steel door
- HINGE:**  
Continuous piano hinge allows opening to 89°
- LOCK / LATCH:**  
Self latching ring operated slam latch inside and a hex head slam latch outside
- FINISH:**  
High quality white powder coat primer
- PACKAGING:**  
Individually wrapped, 1 per box

## OPTIONS AVAILABLE

- MATERIAL:**  
Stainless steel 304 #4 (brushed finish)

Fire Rating information on Page 2

For a complete list of options visit [www.BestAccessDoors.com](http://www.BestAccessDoors.com)

Scan or Click



To view Pricing and Additional Product Info.

LEED READY: THIS PRODUCT CONTRIBUTES TO LEED® CREDITS



SKU: **BA-FRU**

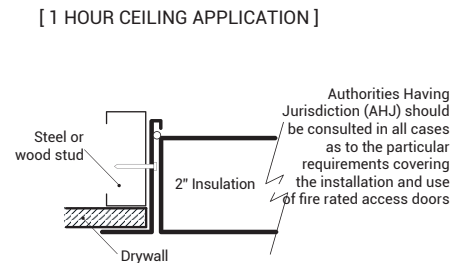
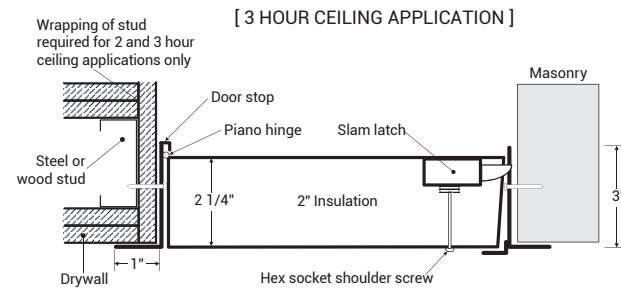
## FIRE RATED ACCESS PANEL INSULATED UPWARD OPENING

FOR CEILING ONLY



## INSTALLATION

>> [CLICK TO VIEW ADDITIONAL DETAILS AND PRICING <<](#)

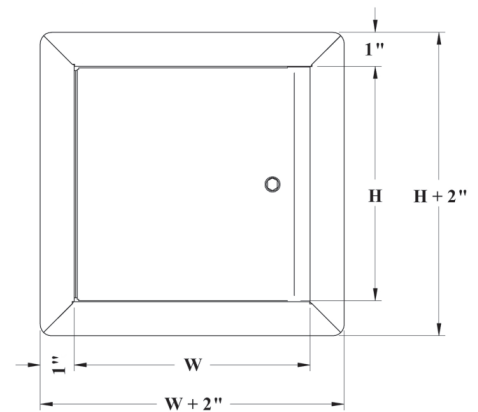


## DIMENSIONS AND APPEARANCE

### STANDARD SIZES:

DOOR SIZE W x H INCHES (MM)	NUMBER OF LOCKS	WEIGHT	
		LBS	KG
22 x 30 (558 x 762)	1	30	30.6
22 x 36 (558 x 914)	2	37	16.8
24 x 24 (609 x 609)	1	29	13.2

(Clear opening with door opened =  $W - 3 \frac{1}{2}"$ )  
ROUGH WALL OPENING IS DOOR SIZE +  $\frac{1}{4}"$  OR + 6mm



## PROJECT DATA

Custom Sizes Available - Fast!

PROJECT NAME :	QTY	W	H	OPTIONS
ARCHITECT :				
DEALER :				
CONTRACTOR :				
LOCATION :	SPECIAL INSTRUCTIONS :			
DATE :				
TAGGING INSTRUCTIONS :	SUBMITTAL APPROVAL : (signature or stamp)			

TELEPHONE:  
1-800-483-0823

FAX:  
1-888-828-6021



228 PARK AVE. S. #76520  
NEW YORK, NY, 10003



WEBSITE:  
[www.BestAccessDoors.com](http://www.BestAccessDoors.com)

E-MAIL:  
[info@BestAccessDoors.com](mailto:info@BestAccessDoors.com)

**■ FIRE RATING**

**FOR HORIZONTAL WALL ASSEMBLIES ONLY:**

CERTIFIED TO STANDARDS: ASTM E119 (2012), CAN/ULC S101 (2007).

RATING ACHIEVED: 3 hours in non-combustible construction. 1 hour in combustible construction.

MAXIMUM SIZE: 24" x 36" (hinges & latch on 36" long sides) (610 mm x 914 mm).

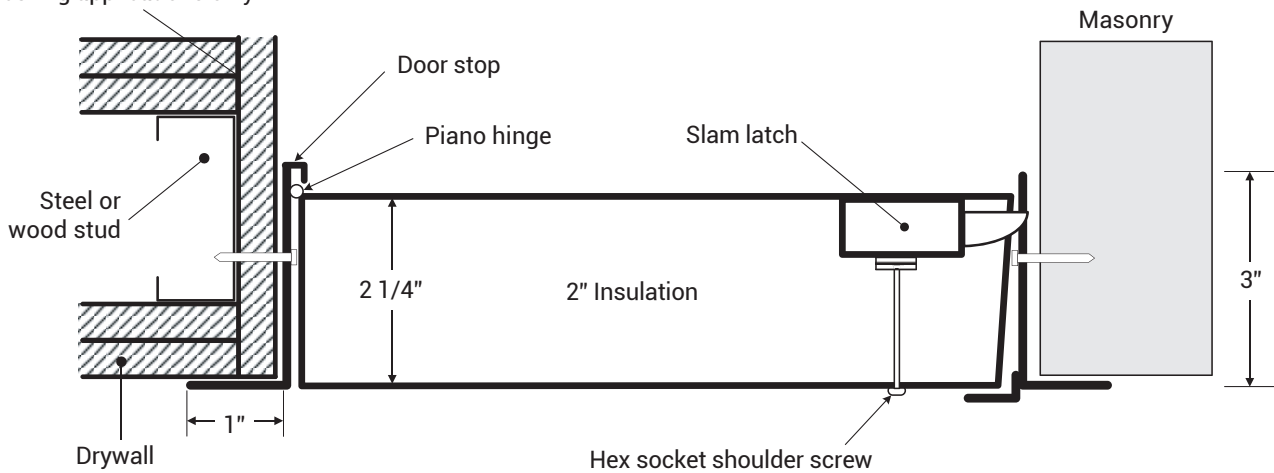
Tolerances on dimension limitations are ± 3" (76 mm) as long as the area does not exceed 864 in<sup>2</sup>.

TEMPERATURE RISE: Not applicable.

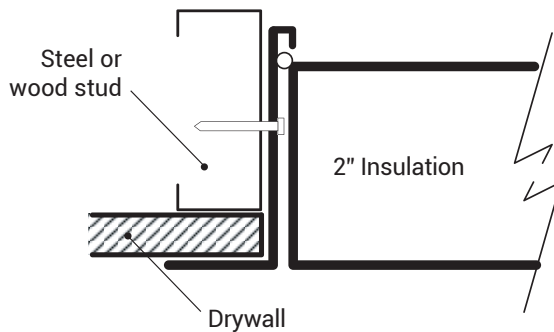
**■ INSTALLATION: WALLS AND CEILINGS**

Wrapping of stud required for 2 and 3 hour ceiling applications only

[ 3 HOUR CEILING APPLICATION ]



[ 1 HOUR CEILING APPLICATION ]



Authorities Having Jurisdiction (AHJ) should be consulted in all cases as to the particular requirements covering the installation and use of fire rated access doors



TELEPHONE:  
1-800-483-0823  
FAX:  
1-888-828-6021



228 PARK AVENUE  
S. #76520  
NEW YORK, NY, 10003



WEBSITE:  
[www.BestAccessDoors.com](http://www.BestAccessDoors.com)  
E-MAIL:  
[info@BestAccessDoors.com](mailto:info@BestAccessDoors.com)