

BA-GRH GALVANIZED LADDER ACCESS ROOF HATCH

Application

Acudor Ladder Access Roof Hatches are designed to provide convenient, economical access to the roof of a building

Features BA-GRH

- Weather tight construction
- Convenient one-hand operation
- 12" high insulated curb
- Supports 40lbs./sq. ft. live load
- G90 Galv. Steel
- Stainless Steel Hardware

Optional Features BA-GRH

- Stainless Steel cover, curb
- Polycarbonate domes for daylighting
- Louvered Curbs
- Curb Mounted Units
- Curb pitch corrected for sloped roof
- Higher curb heights for "green roof" applications

BA-GRH Specifications:

Cover: Double-skin construction ("in box type design") with 1" Polyiso (R-6) insulation and a continuous EPDM foam weather/draft seal gasket that is attached to the inside of cover to provide a flush, tight fit. Designed to support a live load of 40lbs./sq. ft., the cover is 14 gauge galvanized steel with a 22 gauge galvanized steel inside liner.

Curb: 14 gauge galvanized steel with 1" thick Polyiso (R-6) insulation with Fiberglass liner at curb exterior. Curb is 12" high, with 3.375" wide bottom flange and pre-drilled mounting holes.

Hinge: Heavy duty galvanized steel pintle hinges with 3/8" SS pin

Opening: Gas spring operators allow cover to open and close with ease. Stainless Steel inside pull handle allows for easy control when closing cover.

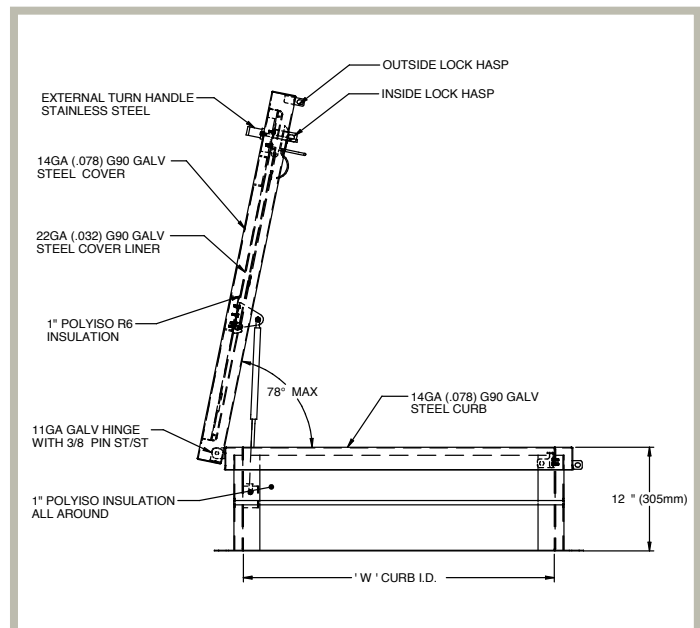
Door Latch: Self latching, Stainless Steel outside T handle with stainless steel inside lock and lever assembly. Unit also has inside and outside padlock provisions.

Finish: Material is prepared with an iron phosphate wash, followed by a rust inhibiting primer, and then a baked on polyester enamel grey paint.

BA-GRH STANDARD SIZES *(other sizes available)*

| Model | Curb ID W&L | Weight per Hatch |
|-------|---------------------|------------------|
| | inches (mm) | lbs. (kg.) |
| G3232 | 24 x 24 (610 x 610) | 125 (56.8) |
| G3238 | 24 x 30 (610 x 762) | 130 (58.9) |
| G3244 | 24 X 36 (610 X 914) | 135 (61.4) |
| G3838 | 30 x 30 (762 x 762) | 140 (63.5) |
| G3844 | 30 x 36 (762 x 914) | 155 (70.5) |
| G4444 | 36 x 36 (914 x 914) | 170 (77.3) |

For detailed specifications see submittal sheet





228 Park Ave S # 76520, New York NY 10003-1502, United States
 www.BestAccessDoors.com | sales@bestaccessdoors.com
 Tel.: 1-800-483-0823 | Fax: 1-888-828-6021

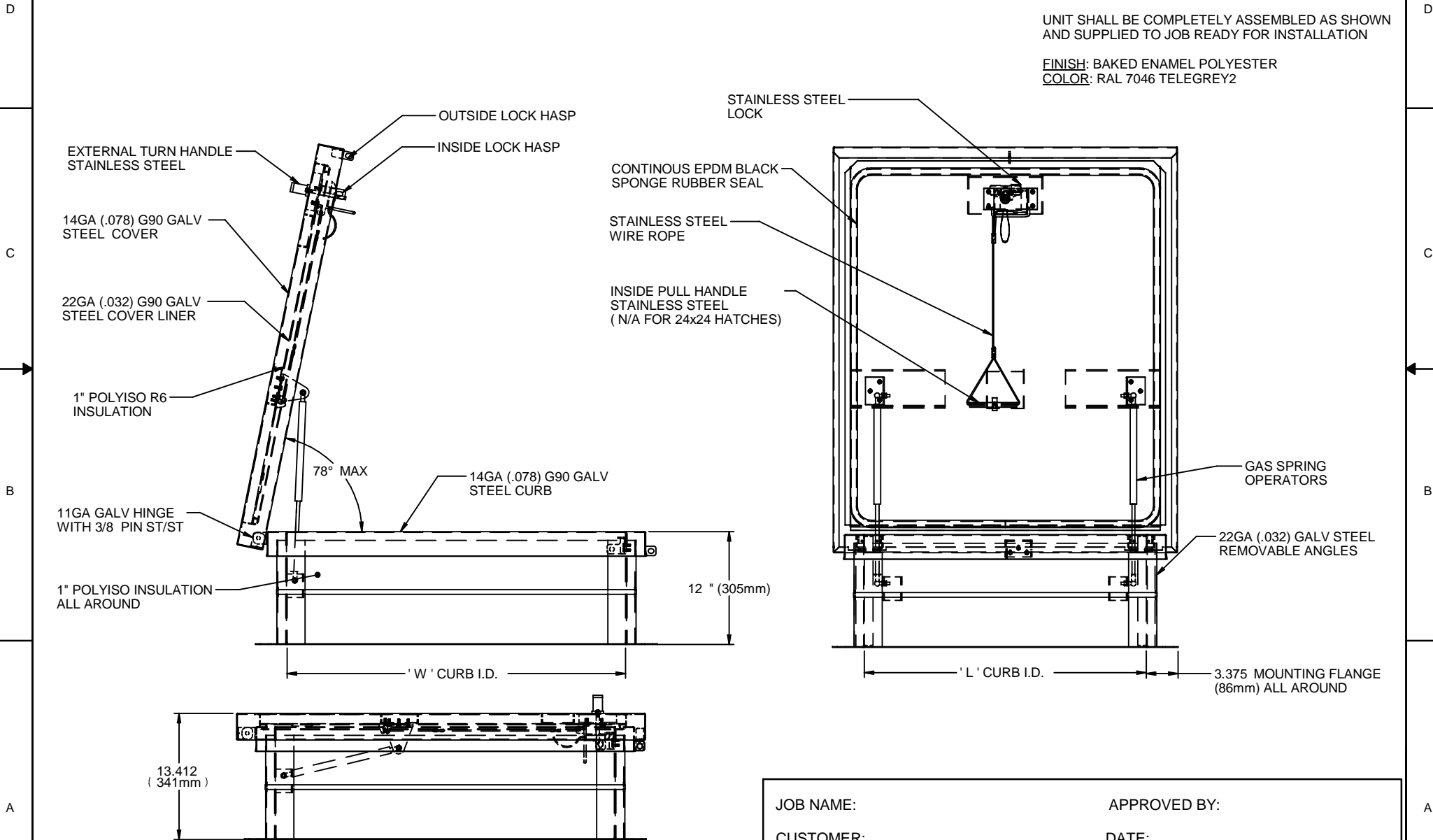
| QTY | OPENING WIDTH 'W' | OPENING LENGHT 'L' | QTY | OPENING WIDTH 'W' | OPENING LENGHT 'L' |
|-----|-------------------|--------------------|-----|-------------------|--------------------|
| | 24" (610mm) | 24" (610mm) | | 36" (914mm) | 30" (762mm) |
| | 36" (914mm) | 24" (610mm) | | 36" (914mm) | 36" (914mm) |
| | 30" (762mm) | 30" (762mm) | | | |

LADDER ACCESS ROOF HATCH GALVANIZED

ASSEMBLY NOTE:

UNIT SHALL BE COMPLETELY ASSEMBLED AS SHOWN AND SUPPLIED TO JOB READY FOR INSTALLATION

FINISH: BAKED ENAMEL POLYESTER
COLOR: RAL 7046 TELEGREY2



JOB NAME: _____ APPROVED BY: _____
 CUSTOMER: _____ DATE: _____