

# BA-WTFD

## FLOOR DOOR

Channel Frame, 300 lbs./sqft loading

### Application

- Indoor or Outdoor applications where dirt and water are prevented from falling into work area. Drainage is provided through threaded coupling in channel

### Product Features

- Channel frame construction with 1 1/2" drainage coupling and integral anchor flange is designed to be cast into concrete
- Diamond plate door panel is equipped with a flush aluminum drop handle and an automatic hold open arm



### BA-WTFD Floor Door Specifications:

Material: Aluminum door and frame; stainless steel hinges and hardware Door:

1/4" aluminum diamond plate reinforced for live load of 300 lb/sq. ft. Frame:

Angle frame from aluminum extrusion with an integral 1" anchor flange Hinge:

Stainless steel butt hinges with tamperproof stainless steel bolts and nuts

Opening Device: Automatic hold open arm with red vinyl grip allows door panel to open to 90 degrees, locking door in open position, and allowing for easy control when closing door panel. When required, stainless steel compression springs can be provided to add lift assistance.

Standard Latch: Flush aluminum drop handle with staple for padlock.

Also available: Recessed padlock provision: st/stl Slamlock

Finish: Mill finish, with optional bituminous coating on exterior of frame

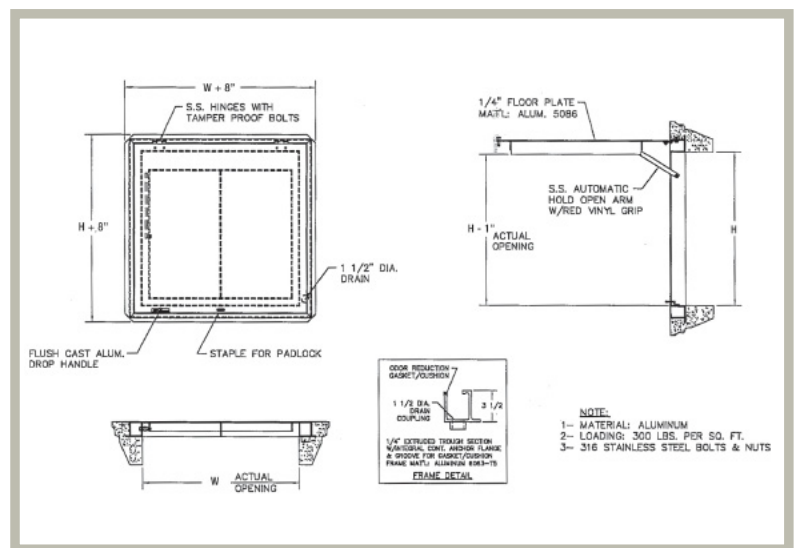
### BA-WTFD STANDARD SIZES

(other sizes available upon request)

Nominal Door Size W&H		Weight per Door	
inches	mm	lbs.	kg.
24 x 24	610 x 610	60	27.2
24 x 30	610 x 762	70	31.8
24 x 36	610 x 914	75	34
30 x 30	762 x 762	80	36.4
30 x 36	762 x 914	90	41
36 x 36	914 x 914	100	45.4
36 x 48	914 x 1220	120	54.5
42 x 42	1067 x 1067	125	56.8
48 x 48*	1220 x 1220	155	70.4
48 x 72*	1220 x 1829	210	95.3
60 x 60*	1524 x 1524	220	98.9

\* Double Leaf

For detailed specifications see submittal sheet



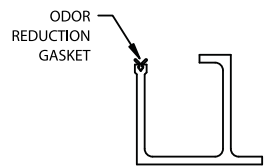
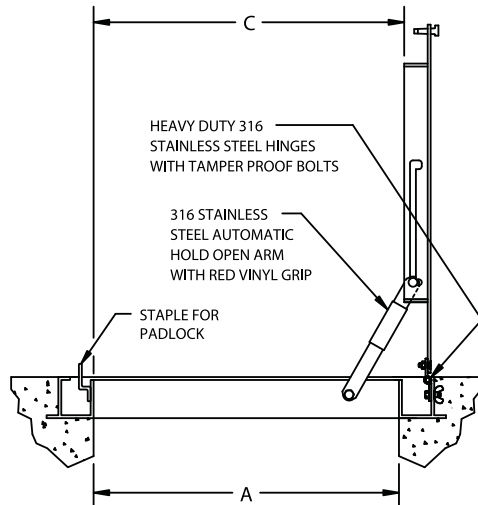
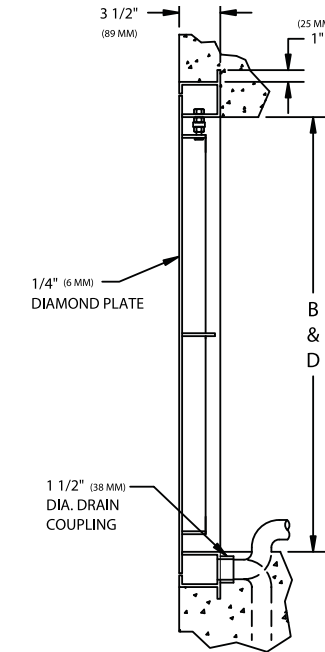
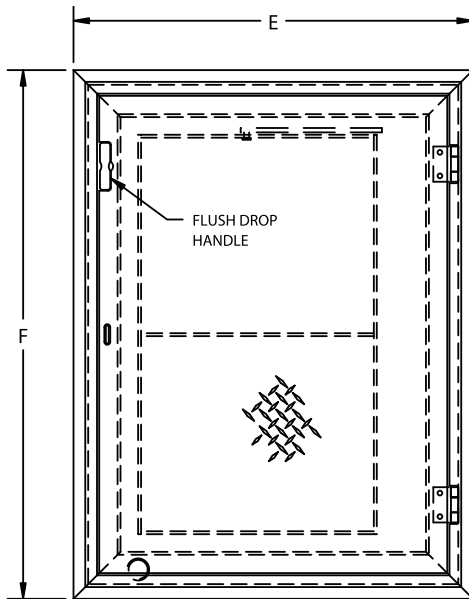


228 Park Ave S # 76520, New York NY 10003-1502, United States  
 www.BestAccessDoors.com | sales@bestaccessdoors.com  
 Tel.: 1-800-483-0823 | Fax: 1-888-828-6021

# BA-WTFD

## CHANNEL FRAME FLOOR DOOR SINGLE LEAF

NOMINAL DOOR SIZE	FRAME OPENING		CLEAR OPENING		OVERALL SIZE		WEIGHT
in. (mm)	A in. (mm)	B in. (mm)	C in. (mm)	D in. (mm)	E in. (mm)	F in. (mm)	LBS. (KG)
24 x 24 (610 x 610)	24 (610)	24 (610)	24 (610)	24 (610)	32 (813)	32 (813)	60 (27)
24 x 30 (610 x 762)	24 (610)	30 (762)	24 (610)	30 (762)	32 (813)	38 (965)	69 (31)
30 x 30 (762 x 762)	30 (762)	30 (762)	29 (737)	30 (762)	38 (965)	38 (965)	79 (36)
30 x 36 (762 x 914)	30 (762)	36 (914)	29 (737)	36 (914)	38 (965)	44 (1118)	88 (40)
36 x 36 (914 x 914)	36 (914)	36 (914)	35 (889)	36 (914)	44 (1118)	44 (1118)	99 (45)
36 x 48 (914 x 1219)	36 (914)	48 (1219)	35 (889)	48 (1219)	44 (1118)	56 (1422)	121 (55)
42 x 42 (1067 x 1067)	42 (1067)	42 (1067)	41 (1041)	42 (1067)	50 (1270)	50 (1270)	123 (56)



1/4" EXTRUDED TROUGH SECTION W/INTEGRAL CONTINUOUS ANCHOR FLANGE & GROOVE FOR GASKET  
 FRAME MAT'L: ALUMINUM 6063-T5

FRAME DETAIL

NOTE:  
 -MATERIAL: ALUMINUM WITH 316 STAINLESS STEEL NUTS & BOLTS, HINGES, AND HOLD OPEN ARM.  
 -LOADING: 300 LBS. PER SQ. FOOT. (1464 KG. PER SQ. M)

### OPTIONAL FEATURES

- S.S. HORIZONTAL SPRINGS
- S.S. SLAMLOCK
- BITUMINOUS PAINT ON AREA IN CONTACT WITH CONCRETE
- OTHERS: \_\_\_\_\_

JOB NAME:  
 CUSTOMER:

APPROVED BY:  
 DATE:

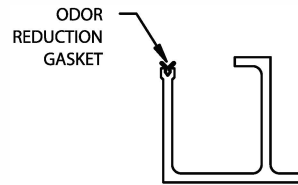
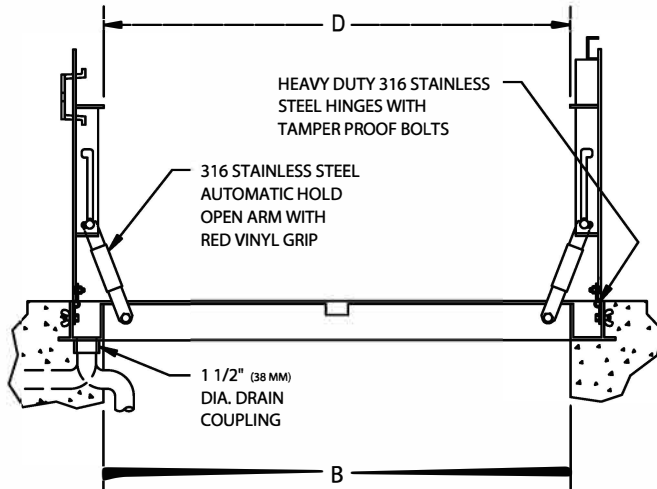
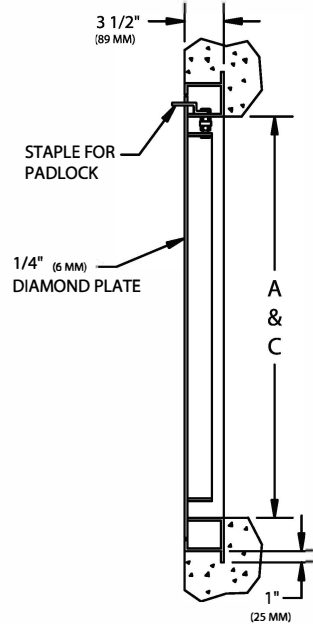
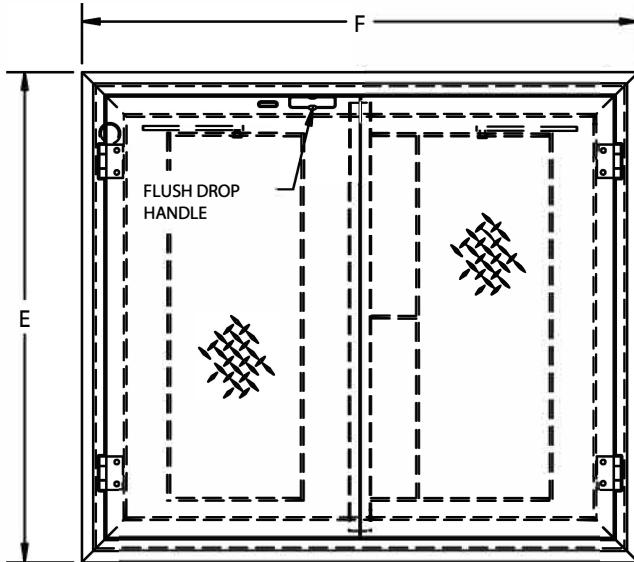


228 Park Ave S # 76520, New York NY 10003-1502, United States  
 www.BestAccessDoors.com | sales@bestaccessdoors.com  
 Tel.: 1-800-483-0823 | Fax: 1-888-828-6021

# BA-WTFD

## CHANNEL FRAME FLOOR DOOR DOUBLE LEAF

NOMINAL DOOR SIZE	FRAME OPENING		CLEAR OPENING		OVERALL SIZE		WEIGHT
in. (mm)	A in. (mm)	B in. (mm)	C in. (mm)	D in. (mm)	E in. (mm)	F in. (mm)	LBS. (KG)
48 x 48 (1219 x 1219)	48 (1219)	48 (1219)	48 (1219)	45 (1143)	56 (1422)	56 (1422)	158 (72)
48 x 72 (1219 x 1829)	48 (1219)	72 (1829)	48 (1219)	70 (1778)	56 (1422)	80 (2032)	215 (98)
60 x 60 (1524 x 1524)	60 (1524)	60 (1524)	60 (1524)	58 (1473)	68 (1727)	68 (1727)	223 (101)



1/4" EXTRUDED TROUGH SECTION  
 W/INTEGRAL CONTINUOUS ANCHOR  
 FLANGE & GROOVE FOR GASKET  
 FRAME MAT'L: ALUMINUM 6063-T5

### FRAME DETAIL

OPTIONAL FEATURES
<input type="checkbox"/> S.S. HORIZONTAL SPRINGS
<input type="checkbox"/> S.S. SLAMLOCK
<input type="checkbox"/> BITUMINOUS PAINT ON AREA IN CONTACT WITH CONCRETE
<input type="checkbox"/> OTHERS: _____

**NOTE:**  
 -MATERIAL: ALUMINUM WITH 316 STAINLESS STEEL NUTS & BOLTS, HINGES, AND HOLD OPEN ARM.  
 -LOADING: 300 LBS. PER SQ. FOOT.

JOB NAME:  
 CUSTOMER:

APPROVED BY:  
 DATE: