



Quality Access Doors- FAST!

# INSTALLATION GUIDE

TELEPHONE:  
1-800-483-0823  
FAX:  
1-888-828-6021

228 PARK AVE. S. #76520  
NEW YORK, NY, 10003

WEBSITE:  
[www.BestAccessDoors.com](http://www.BestAccessDoors.com)  
E-MAIL:  
[info@bestaccessdoors.com](mailto:info@bestaccessdoors.com)

SKU: BA-GA

FLOOR & SIDEWALK DOORS INSTALLATION AND MAINTENANCE INSTRUCTIONS

These are recommended guidelines only. Locally accepted and/or mandated installation practices, and sealing procedures should be followed to ensure the weatherability of floor and sidewalk doors.

## ■ WARNING

Floor doors are spring loaded. DO NOT release snap latch when the floor door is in the upside down position. Verify that snap latch is engaged. Position unit in upright position to handle the floor door.

## ■ INSTALLATION

Handle with care during transport and installation to ensure against bending or racking of the floor door.

1. Set the units into position over the desired opening area.
2. Secure the floor door into the desired area with welding, bolting or other anchorage, making sure not to interfere with the operation of the hatch
3. Confirm that unit is plumb, level and square prior to final fastening. The unit must be reasonably level to open properly. If more than 1/8" out of level, open the unit and shim between the floor/sidewalk door bottom at appropriate corners to bring the unit into line.
4. Pour concrete to the top edge of the frame, leveling to finish flush with the top of the flange of the floor door.
5. Allow the concrete to cure for 7 days prior to operating the floor door. Operating the unit prior to 7 days may crack the concrete.
6. After 7 days, open the door(s) and inspect the unit for excess concrete that may have seeped or fallen into the hinges, snap latch, gutter or other areas. Remove any concrete to ensure smooth operation.

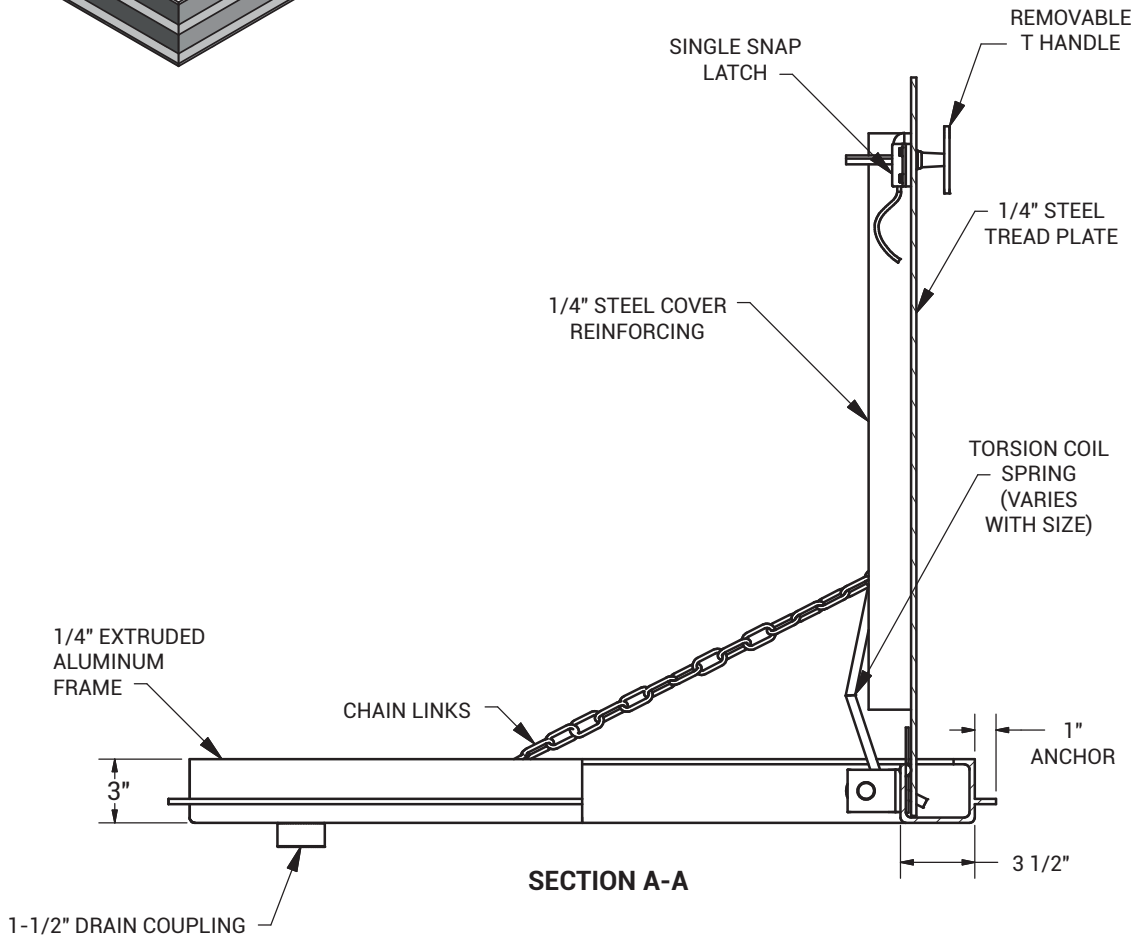
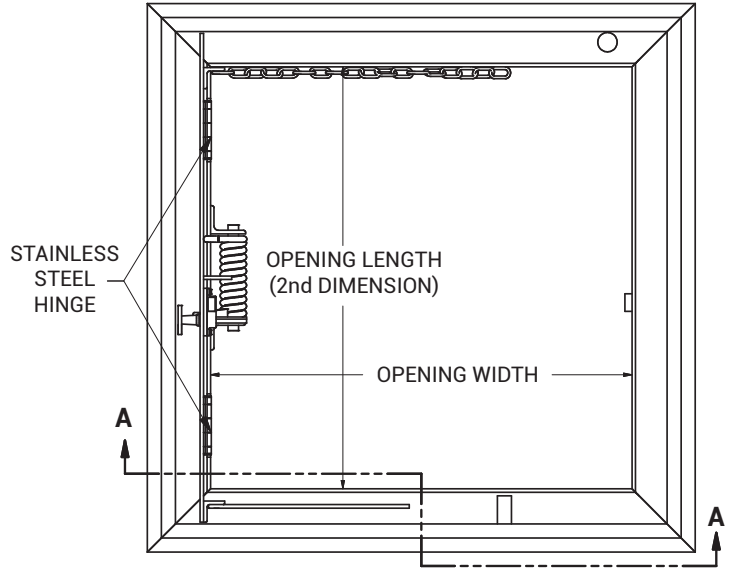
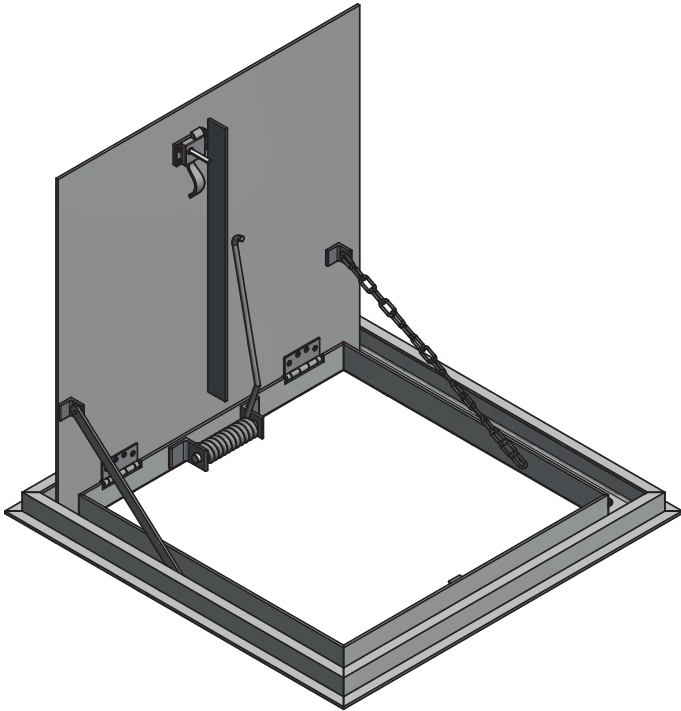
## ■ MAINTENANCE

This unit is an egress/access Floor Door of corrosion-resistant construction and should be regularly inspected and maintained. Scheduled inspection and maintenance will preclude the possibility of malfunction due to mechanism inactivity in possibly corrosive interior and exterior exposures

1. Open and close the unit by turning the snap latch release handle from inside the floor opening.
2. Repeat opening and closing from the outside of the floor opening.
3. Check the snap latch mechanism, latch points, pivots, hinges etc. for freedom of action. Note any indication of corrosion. Initiate maintenance corrections as required.
4. Lubricate all mechanisms, latches, pivots, hinges, etc. with a silicone spray lubricant as required to maintain a smooth opening and closing of the hatch door.
5. Do Not use regular lubricating oil as it can attract dust and grit. Non-moving parts can be cleaned with a mild soap or dishwashing detergent and water solution. Gaskets can be cleaned with a clean, damp, lint-free cloth. Do not apply mineral oils, vinyl dressings, or other lubricants to the gasket as they can cause the gasket to break down over time.

**SKU: BA-GA**

**FLOOR & SIDEWALK DOORS INSTALLATION AND MAINTENANCE INSTRUCTIONS**





Quality Access Doors - FAST!

# INSTALLATION GUIDE

TELEPHONE:  
1-800-483-0823  
FAX:  
1-888-828-6021

228 PARK AVE. S. #76520  
NEW YORK, NY, 10003

WEBSITE:  
www.BestAccessDoors.com  
E-MAIL:  
info@bestaccessdoors.com

## SKU: BA-GA

### FLOOR & SIDEWALK DOORS INSTALLATION AND MAINTENANCE INSTRUCTIONS

