



Quality Access Doors- FAST!

SUBMITTAL/TECHNICAL DATA SHEET

DESCRIPTIONS

FRE Fire-Rated Access Door features a robust design that ensures fire resistance for up to 1.5 hours, making it ideal for maintaining a 2-hour fire barrier on vertical surfaces. With its range of sizes, this access door seamlessly integrates into various architectural applications while providing dependable performance in demanding environments.

SPECIFICATIONS

DOOR: Doors are 1-1/2 hr. UL approved 10B, self closing and, Self-locking approved for use in 2 hour fire barrier for vertical surfaces.

FRAME: 16 gauge Steel

HINGE: Flush Continuous Piano

LATCH: Universal latch mechanism can be converted between knob, ring and flat key lock, and special order mortised key lock.

INSULATION: 2 inch Thick, Fire-Rated mineral fiber to assist in reducing heat transfer in the event of fire.

AUTOMATIC CLOSING : Springs enable self closing on all size doors. A second spring is included on sizes 16" thru 24" and must be used for the ceiling fire rating for these sizes.

OPTIONS (at additional cost)

- Custom Sizes
- Finishes Colors/Galvanized/Stainless
- Mortise Key Lock Options
- Gasketing

For a complete list of options visit www.BestAccessDoors.com



SKU: **BA-FRE**

FIRE-RATED ACCESS DOOR

WITH ENCLOSURE

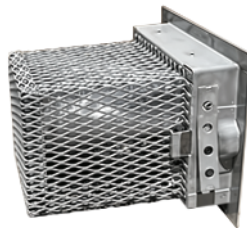


DIMENSIONS AND APPEARANCE

>> [CLICK TO VIEW ADDITIONAL DETAILS AND PRICING <<](#)

STANDARD SIZES:

MODEL SIZE W X H (inches)	WALL OPENING DIMENSIONS 1-hr ceiling opening dimensions		CEILING OPENING DIMENSIONS 3-hr ceiling opening dimensions		LATCHES	SHIPPING WEIGHT (lbs.)		
	W	H	W	H		FD/DFWB	FDSS	HGFD
8" x 8"	8-3/8"	8-3/8"	9-3/8"	9-3/8"	1	7	11	11
10" x 10"	10-3/8"	10-3/8"	11-3/8"	11-3/8"	1	9	9	15
12" x 12"	12-3/8"	12-3/8"	13-3/8"	13-3/8"	1	11	11	17
14" x 14"	14-3/8"	14-3/8"	15-3/8"	15-3/8"	1	15	15	22
16" x 16"	16-3/8"	16-3/8"	17-3/8"	17-3/8"	1	16	16	24
18" x 18"	18-3/8"	18-3/8"	19-3/8"	19-3/8"	1	19	20	30
20" x 30"	20-3/8"	30-3/8"	21-3/8"	31-3/8"	1	34	35	51
22" x 30"	22-3/8"	30-3/8"	23-3/8"	31-3/8"	2	32	33	53
24" x 24"	24-3/8"	24-3/8"	25-3/8"	25-3/8"	1	27	28	47
22" x 36"	22-3/8"	36-3/8"	23-3/8"	37-3/8"	2	40	41	58
24" x 36"	24-3/8"	36-3/8"	25-3/8"	37-3/8"	2	42	43	60
24" x 48"	24-3/8"	48-3/8"			2	57	59	85
30" x 30"	30-3/8"	30-3/8"			2	44	45	62
32" x 32"	32-3/8"	32-3/8"			2	54	55	81
36" x 36"	36-3/8"	36-3/8"			2	61	63	92
36" x 48"	36-3/8"	48-3/8"			2	75	78	114



VERTICAL/HORIZONTAL EXTERIOR APPLICATION: Stainless Steel Exterior Application and Roof Hatches for additional prices.

ENCLOSURE:

- 16gauge Expanded Metal Cage
- 16gauge Steel Shelf not attached for the sensors that allow you to hinge the door in any direction.

PROJECT DATA

Custom Sizes Available - Fast!

Scan or Click



To view Pricing and Additional Product Info.

PROJECT NAME :	QTY	W	H	OPTIONS
ARCHITECT :				
DEALER :				
CONTRACTOR :				
LOCATION :	SPECIAL INSTRUCTIONS :			
DATE :				
TAGGING INSTRUCTIONS :	SUBMITTAL APPROVAL : (signature or stamp)			

TELEPHONE:
1-800-483-0823
FAX:
1-888-828-6021



228 PARK AVE. S. #76520
NEW YORK, NY, 10003



WEBSITE:
www.BestAccessDoors.com
E-MAIL:
info@BestAccessDoors.com